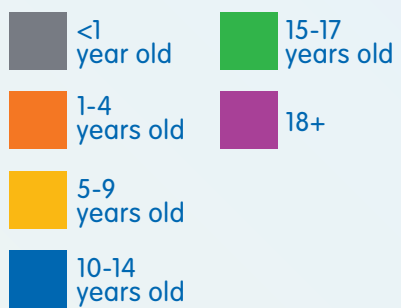
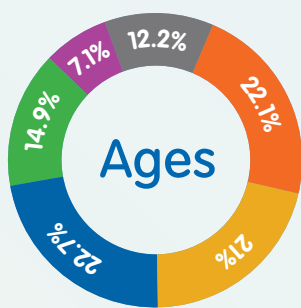
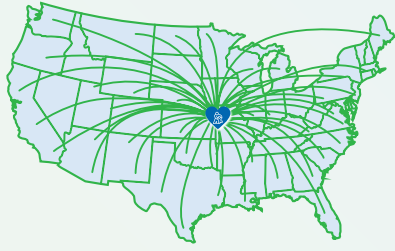


Our Kids



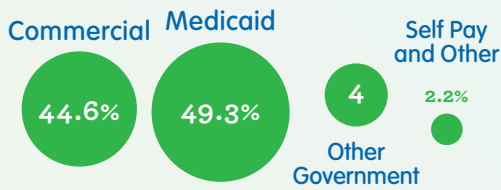
travel from **46** states



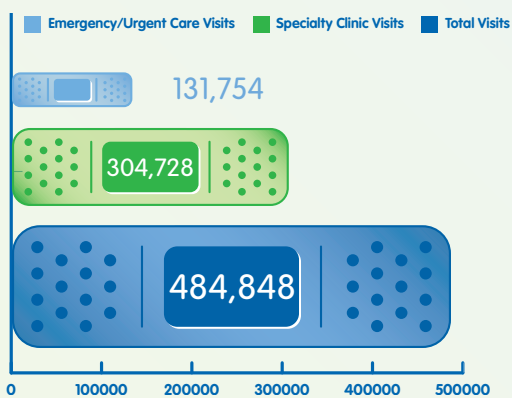
17 countries around the world



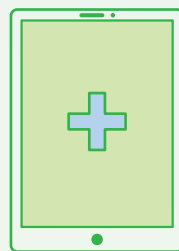
Pay for their care with:



speak **70** languages



81,503 telemedicine visits

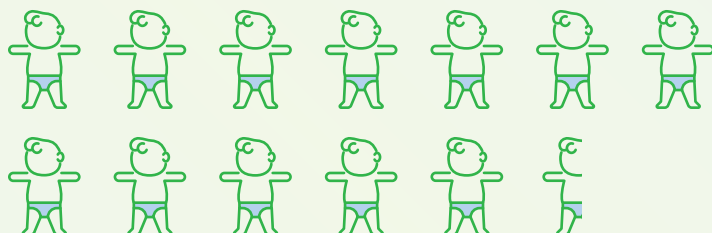


19,290 surgical cases



4,619 medical transports

12,543 admissions  = 1,000



8,201 employees

786 pediatric specialists on medical staff

625 volunteers



7,771 miles to our sister hospitals in Guangzhou, China

1,672 miles to our sister hospital in Mexico City, Mexico

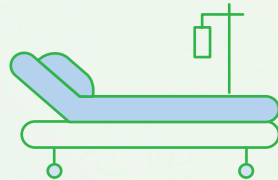
8,696 home care visits



\$104,686,749 Total uncompensated care in 2020

Founded in **1897**

with a single bed hospital



386 Inpatient Beds

Our locations

Children's Mercy

Adele Hall Campus

Village West

St. Joseph

Northland

Blue Valley

Vibrant Health

East

Hospital Kansas

Broadway

University of Kansas Hospital

Wichita

Junction City

Joplin

Olathe

Operation Breakthrough

FY2021



Education

- 600 medical students each year
- 30-plus subspecialty training fellowship training programs
- 100 pediatric and medicine/pediatric residents annually play a crucial role in care for patients
- More than 1,400 students from dozens of nursing schools receive training here



21-GONSH 0552

UMKC



Research

- Children's Mercy is among the world's leaders in genomics, precision therapeutics and ethics
- The Children's Mercy Research Institute's dedicated tower opened in February 2021
- Genomic Answers for Kids is a first-of-its-kind National Pediatric Data Repository developed by researchers at Children's Mercy
- Our vision is for every child to have access to precision medicine — an accurate, faster diagnosis with treatment tailored just for them
- Research is integrated into everything we do at Children's Mercy. Every patient encounter, every interaction, every piece of data we collect is held to the highest research standard and is focused on finding answers for our patients and their families



Clinical Care

- One of only 30 centers in the nation to be verified as a Level 1 Children's Surgery Center — the highest possible rating — by the American College of Surgeons
- Survival rates for childhood cancer exceed national averages
- Fetal Health Center, among the first to deliver high-risk babies inside a children's hospital
- Level 1 Pediatric Trauma Center has received verification from the American College of Surgeons, becoming the only ACS-verified Pediatric Level 1 Trauma Center between St. Louis and Denver
- One of the nation's largest Child Life programs, making the hospital experience more comfortable for patients and families