

# Why does Children's NEVER SETTLE?



**Children's**<sup>SM</sup>  
Healthcare of Atlanta  
Foundation

At Children's, we are driven by the pursuit of health and hope for all children. We've been a trusted resource for Georgia families for more than 100 years, and we're consistently recognized as one of the nation's best children's hospitals. Managing more than 1 million patient visits each year, we are one of the largest pediatric clinical care providers in the U.S., and many of our specialty programs—including cancer, orthopedics and neurosciences—rank among the best in the country. As we build Arthur M. Blank Hospital at the heart of our growing North Druid Hills campus, we are on the front line of the next great transformation in pediatric care.

## We are dreaming bigger to create healing spaces for the children of metro Atlanta, Georgia and the Southeast.

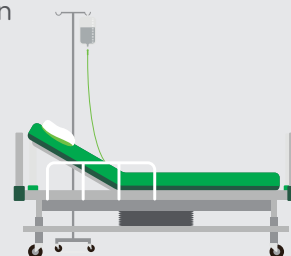


### Arthur M. Blank Hospital:

**19 stories**, more than **1.5 million square feet** of hospital space

A campus of more than  
**70 acres**

**35% more beds**  
overall, with room  
to grow



**72% more** pediatric cancer patient  
beds in the **Aflac Cancer and Blood  
Disorders Center** to meet  
the **17%** rise in new pediatric  
cancer diagnoses over  
the last five years

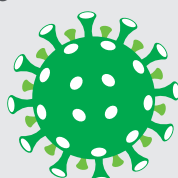
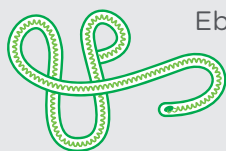


**25%**  
more  
**pediatric  
cardiac beds**



**4** specially  
designed  
**cardiovascular  
operating rooms**

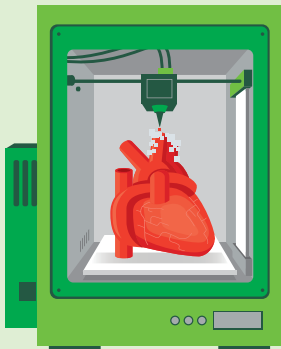
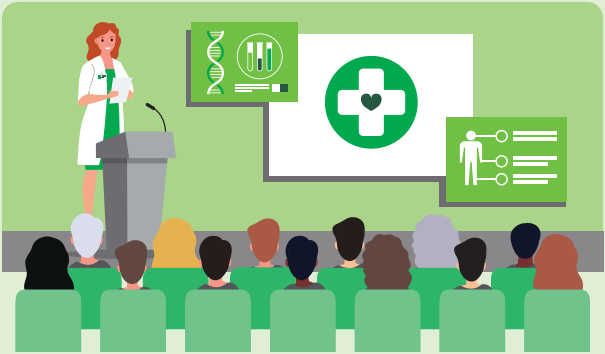
A **Special Care Unit (SCU)**  
for treating patients with highly  
infectious diseases like  
Ebola and COVID-19



**75%** of  
**patient rooms**  
**have garden views**,  
which may decrease  
pain, reduce stress and  
lower blood pressure

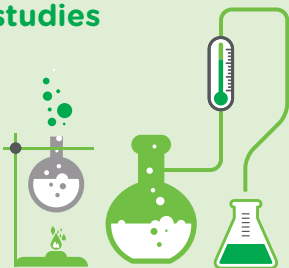
We are building capacity to provide specialty care in a high-tech environment dedicated to clinical research, training and innovation.

Developing the  
**next generation**  
**of pediatric caregivers:**  
teaching and training more than  
**200** fellows and residents each year



**3D printing labs**  
that help create  
**lifesaving treatment**  
**options**

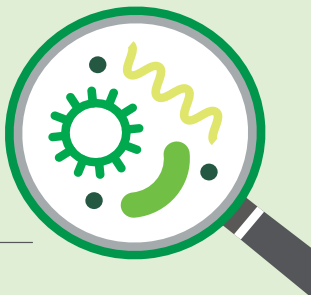
**Increasing** accessibility to  
**clinical research studies**  
**and trials:** giving  
patients access  
to investigational  
drugs, procedures  
and devices



Using **innovative technology**  
**in treatments:** spinal navigation,  
advanced wearable technology,  
and biomechanical research  
data capture to help develop  
**better prosthetics**



**Cell therapy labs** dedicated  
to providing some of  
the **most advanced**  
**care and treatments**



A **behavioral and mental**  
**health plan** to help the  
**1.5 million** children  
in metro Atlanta  
flourish and thrive

**20+** acres of lush green space  
to promote **wellness and healing**

A “**campus in the forest**”  
with approximately **1,200**  
**new trees** being planted  
on the hospital site

